



Client EPO Distribution Server

80000NT11501A Rev. 0 – 2016-08-30

TELIT
TECHNICAL
DOCUMENTATION

SPECIFICATIONS ARE SUBJECT TO CHANGE WITHOUT NOTICE

NOTICE

While reasonable efforts have been made to assure the accuracy of this document, Telit assumes no liability resulting from any inaccuracies or omissions in this document, or from use of the information obtained herein. The information in this document has been carefully checked and is believed to be reliable. However, no responsibility is assumed for inaccuracies or omissions. Telit reserves the right to make changes to any products described herein and reserves the right to revise this document and to make changes from time to time in content hereof with no obligation to notify any person of revisions or changes. Telit does not assume any liability arising out of the application or use of any product, software, or circuit described herein; neither does it convey license under its patent rights or the rights of others.

It is possible that this publication may contain references to, or information about Telit products (machines and programs), programming, or services that are not announced in your country. Such references or information must not be construed to mean that Telit intends to announce such Telit products, programming, or services in your country.

COPYRIGHTS

This instruction manual and the Telit products described in this instruction manual may be, include or describe copyrighted Telit material, such as computer programs stored in semiconductor memories or other media. Laws in the Italy and other countries preserve for Telit and its licensors certain exclusive rights for copyrighted material, including the exclusive right to copy, reproduce in any form, distribute and make derivative works of the copyrighted material. Accordingly, any copyrighted material of Telit and its licensors contained herein or in the Telit products described in this instruction manual may not be copied, reproduced, distributed, merged or modified in any manner without the express written permission of Telit. Furthermore, the purchase of Telit products shall not be deemed to grant either directly or by implication, estoppel, or otherwise, any license under the copyrights, patents or patent applications of Telit, as arises by operation of law in the sale of a product.

COMPUTER SOFTWARE COPYRIGHTS

The Telit and 3rd Party supplied Software (SW) products described in this instruction manual may include copyrighted Telit and other 3rd Party supplied computer programs stored in semiconductor memories or other media. Laws in the Italy and other countries preserve for Telit and other 3rd Party supplied SW certain exclusive rights for copyrighted computer programs, including the exclusive right to copy or reproduce in any form the copyrighted computer program. Accordingly, any copyrighted Telit or other 3rd Party supplied SW computer programs contained in the Telit products described in this instruction manual may not be copied (reverse engineered) or reproduced in any manner without the express written permission of Telit or the 3rd Party SW supplier. Furthermore, the purchase of Telit products shall not be deemed to grant either directly or by implication, estoppel, or otherwise, any license under the copyrights, patents or patent applications of Telit or other 3rd Party supplied SW, except for the normal non-exclusive, royalty free license to use that arises by operation of law in the sale of a product.

USAGE AND DISCLOSURE RESTRICTIONS

I. License Agreements

The software described in this document is the property of Telit and its licensors. It is furnished by express license agreement only and may be used only in accordance with the terms of such an agreement.

II. Copyrighted Materials

Software and documentation are copyrighted materials. Making unauthorized copies is prohibited by law. No part of the software or documentation may be reproduced, transmitted, transcribed, stored in a retrieval system, or translated into any language or computer language, in any form or by any means, without prior written permission of Telit

III. High Risk Materials

Components, units, or third-party products used in the product described herein are NOT fault-tolerant and are NOT designed, manufactured, or intended for use as on-line control equipment in the following hazardous environments requiring fail-safe controls: the operation of Nuclear Facilities, Aircraft Navigation or Aircraft Communication Systems, Air Traffic Control, Life Support, or Weapons Systems (High Risk Activities"). Telit and its supplier(s) specifically disclaim any expressed or implied warranty of fitness for such High Risk Activities.

IV. Trademarks

TELIT and the Stylized T Logo are registered in Trademark Office. All other product or service names are the property of their respective owners.

V. Third Party Rights

The software may include Third Party Right software. In this case you agree to comply with all terms and conditions imposed on you in respect of such separate software. In addition to Third Party Terms, the disclaimer of warranty and limitation of liability provisions in this License shall apply to the Third Party Right software.

TELIT HEREBY DISCLAIMS ANY AND ALL WARRANTIES EXPRESS OR IMPLIED FROM ANY THIRD PARTIES REGARDING ANY SEPARATE FILES, ANY THIRD PARTY MATERIALS INCLUDED IN THE SOFTWARE, ANY THIRD PARTY MATERIALS FROM WHICH THE SOFTWARE IS DERIVED (COLLECTIVELY "OTHER CODE"), AND THE USE OF ANY OR ALL THE OTHER CODE IN CONNECTION WITH THE SOFTWARE, INCLUDING (WITHOUT LIMITATION) ANY WARRANTIES OF SATISFACTORY QUALITY OR FITNESS FOR A PARTICULAR PURPOSE.

NO THIRD PARTY LICENSORS OF OTHER CODE SHALL HAVE ANY LIABILITY FOR ANY DIRECT, INDIRECT, INCIDENTAL, SPECIAL, EXEMPLARY, OR CONSEQUENTIAL DAMAGES (INCLUDING WITHOUT LIMITATION LOST PROFITS), HOWEVER CAUSED AND WHETHER MADE UNDER CONTRACT, TORT OR OTHER LEGAL THEORY, ARISING IN ANY WAY OUT OF THE USE OR DISTRIBUTION OF THE OTHER CODE OR THE EXERCISE OF ANY RIGHTS GRANTED UNDER EITHER OR BOTH THIS LICENSE AND THE LEGAL TERMS APPLICABLE TO ANY SEPARATE FILES, EVEN IF ADVISED OF THE POSSIBILITY OF SUCH DAMAGES.

APPLICABILITY TABLE

PRODUCTS

- ■ SE868-A
- ■ SE868-AS
- ■ SL871
- ■ SL871-S
- ■ SL869-V2
- ■ SL869-V2S
- ■ SC872-A

CONTENTS

NOTICE 2

COPYRIGHTS 2

COMPUTER SOFTWARE COPYRIGHTS 2

USAGE AND DISCLOSURE RESTRICTIONS 3

APPLICABILITY TABLE 4

CONTENTS 5

1. INTRODUCTION 6

2. SAMPLE CONFIGURATIONS 9

2.1.1. Windows Server..... 9

2.1.2. About WGET for Windows 9

2.1.3. Step 1: Prepare your Web Server/Mirror 9

2.1.4. Step 2: Download WGET 9

2.1.5. Step 3: Create the Script..... 9

2.1.6. Step 4: Test Your Script..... 10

2.1.7. Step 5: Set Up Scheduled Task 10

3. GLOSSARY AND ACRONYMS 11

4. DOCUMENT HISTORY 12

1. INTRODUCTION

1.1. Scope

Scope of this document is to give an overview of the fonts, styles and general structure -- first chapter included -- to use when writing hardware user guides.

1.2. Audience

This document is intended for editors who are about to write or edit documentation for Telit.

1.3. Contact Information, Support

For general contact, technical support services, technical questions and report documentation errors contact Telit Technical Support at:

- TS-EMEA@telit.com
- TS-AMERICAS@telit.com
- TS-APAC@telit.com

Alternatively, use:

<http://www.telit.com/support>

For detailed information about where you can buy the Telit modules or for recommendations on accessories and components visit:

<http://www.telit.com>

Our aim is to make this guide as helpful as possible. Keep us informed of your comments and suggestions for improvements.

Telit appreciates feedback from the users of our information.

1.4. Text Conventions



Danger – This information **MUST** be followed or catastrophic equipment failure or bodily injury may occur.



Caution or Warning – Alerts the user to important points about integrating the module, if these points are not followed, the module and end user equipment may fail or malfunction.



Tip or Information – Provides advice and suggestions that may be useful when integrating the module.

All dates are in ISO 8601 format, i.e. YYYY-MM-DD.

1.5. Related Documents

- Telit_Jupiter_MT33xx_Host_EPO_Application_Note_r1, 80433NT11385A r1
- Telit_SGEE-EPO_Application_Note_r2, 80433NT11332A r2

2. SAMPLE CONFIGURATIONS

This document offers sample configuration that will allow you to stage your own SGEE EPO mirror server for the Windows operating system.

2.1.1. Windows Server

While there are many alternatives for retrieving files from an HTTP server on a scheduled basis, in this example we have chosen the GNU open source utility WGET. You may opt to use your own alternative.

This example will use Scheduled Tasks to execute a batch script that will download the extended ephemeris data files from the Telit server and place them on your SGEE EPO mirror server.

2.1.2. About WGET for Windows

GNU WGET is a free network utility to retrieve files from the World Wide Web using HTTP and FTP, the two most widely used Internet protocols. Because WGET supports recursive retrieval of files and directories, it is ideal for setting up your own extended ephemeris mirror.

WGET works exceedingly well on slow or unstable connections and will make repeated retry attempts until the targeted contents are fully retrieved. File retrievals can be time-stamped, thus WGET can see if the remote file has changed since the last retrieval and automatically retrieve it only if it has changed.

WGET also supports proxy servers, which can provide access if your host resides behind a firewall requiring a proxy.

For additional information on the command-line parameters for WGET, please reference the documentation provided along with the WGET installation.

2.1.3. Step 1: Prepare your Web Server/Mirror

Install your preferred version of Windows Server and your preferred web server platform, such as Internet Information Server or Apache web server, to act as your server mirror.

For the purposes of this document, the use of Windows Server 2003 is assumed.

Please make note of the directory that represents the home directory of your mirror web site. By default, this directory is C:\INETPUB\WWWROOT.

2.1.4. Step 2: Download WGET

You can download the installation, documentation and source files for WGET at:

<http://gnuwin32.sourceforge.net/packages/wget.htm>

Please download and install WGET on your SGEE- EPO mirror server.

2.1.5. Step 3: Create the Script

Create a directory to contain the batch file that will execute the download process. In this example, the directory containing the batch file on the mirror server is called C:\SCRIPTS.

Copy the entire contents of the C:\Program Files\GnuWin32\bin directory to the C:\SCRIPTS directory.

In your script directory, create a new file called MIRROR.BAT. Edit the MIRROR.BAT file to contain the following command line, replacing your username and password where seen below, followed by an exit command:

```
C:\scripts\wget http://epo.telit.com -P C:\inetpub\wwwroot -c -m -nH --reject
"index.html" --http-user=[your assigned username] --http-password=[your assigned
password]
```

```
Exit
```

Save this file in the C:\SCRIPTS directory.

2.1.6. Step 4: Test Your Script

You can now test the batch script

If the test was successful, you will see something similar to the image here. Telit only guarantees support for 6h, 1-day, 3-day, 5-day, 7-day, 14-day EPO files.

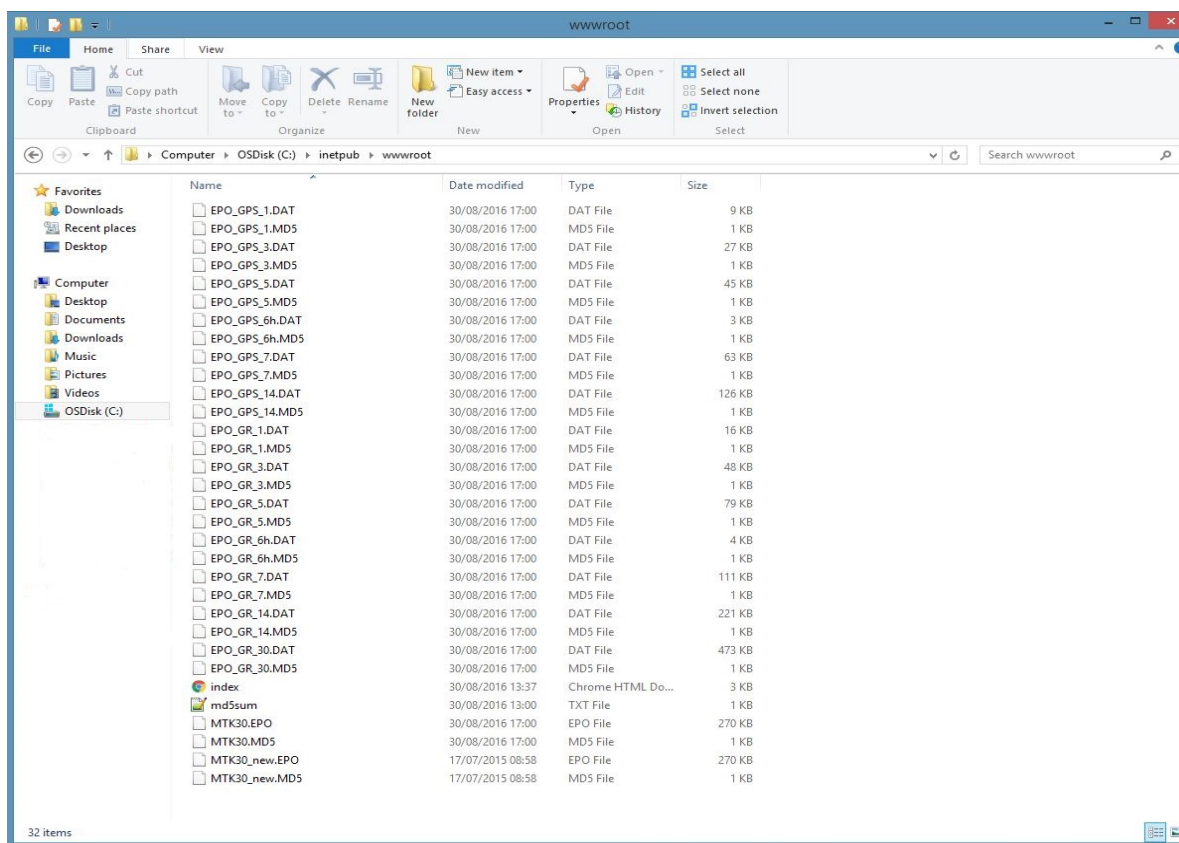


Figure 2 SGEE EPO files on Mirror Server

2.1.7. Step 5: Set Up Scheduled Task

In order to have up-to-date extended ephemeris (EE) files, you should run the script as a background Scheduled Task on your server. In this example, the data files are scheduled to be updated every six hours.

To set up a Scheduled Task, go to Control Panel and select Scheduled Tasks. Then double-click “Add Scheduled Task.”

When prompted, browse to the C:\SCRIPTS\MIRROR.BAT script that was created in section 2.1.4. Then choose the script to run “Daily” at 6:00A.M, every day

When prompted, enter the username and password of the account that should run the task

Note that by selecting “Show multiple schedules,” you can easily add additional times to run this task.

For additional information on setting up Scheduled Tasks for Windows, please see <http://technet.microsoft.com/en-us/library/cc758399.aspx>

3. GLOSSARY AND ACRONYMS

	Description
TTSC	Telit Technical Support Centre
USB	Universal Serial Bus
HS	High Speed
DTE	Data Terminal Equipment
UMTS	Universal Mobile Telecommunication System
WCDMA	Wideband Code Division Multiple Access
HSDPA	High Speed Downlink Packet Access
HSUPA	High Speed Uplink Packet Access
UART	Universal Asynchronous Receiver Transmitter
HSIC	High Speed Inter Chip
SIM	Subscriber Identification Module
SPI	Serial Peripheral Interface
ADC	Analog – Digital Converter
DAC	Digital – Analog Converter
I/O	Input Output
GPIO	General Purpose Input Output
CMOS	Complementary Metal – Oxide Semiconductor
MOSI	Master Output – Slave Input
MISO	Master Input – Slave Output
CLK	Clock
MRDY	Master Ready
SRDY	Slave Ready
CS	Chip Select
RTC	Real Time Clock
PCB	Printed Circuit Board
ESR	Equivalent Series Resistance
VSWR	Voltage Standing Wave Ratio
VNA	Vector Network Analyzer

4. DOCUMENT HISTORY

Revision	Date	Changes
0	2016-08-30	First issue



SUPPORT INQUIRIES

Link to www.telit.com and contact our technical support team for any questions related to technical issues.

www.telit.com



Telit Communications S.p.A.
Via Stazione di Prosecco, 5/B
I-34010 Sgonico (Trieste), Italy

Telit IoT Platforms LLC
5300 Broken Sound Blvd, Suite 150
Boca Raton, FL 33487, USA

Telit Wireless Solutions Inc.
3131 RDU Center Drive, Suite 135
Morrisville, NC 27560, USA

Telit Wireless Solutions Co., Ltd.
8th FL., Shinyoung Securities Bld.
6, Gukjegeumyung-ro8-gil, Yeongdeungpo-gu
Seoul, 150-884, Korea

Telit Wireless Solutions Ltd.
10 Habarzel St.
Tel Aviv 69710, Israel

Telit Wireless Solutions
Tecnologia e Servicos Ltda
Avenida Paulista, 1776, Room 10.C
01310-921 São Paulo, Brazil

Telit reserves all rights to this document and the information contained herein. Products, names, logos and designs described herein may in whole or in part be subject to intellectual property rights. The information contained herein is provided "as is". No warranty of any kind, either express or implied, is made in relation to the accuracy, reliability, fitness for a particular purpose or content of this document. This document may be revised by Telit at any time. For most recent documents, please visit www.telit.com

Copyright © 2016, Telit

Mod. 0809 2016-08 Rev.7